

LANDSCAPE NOTES:

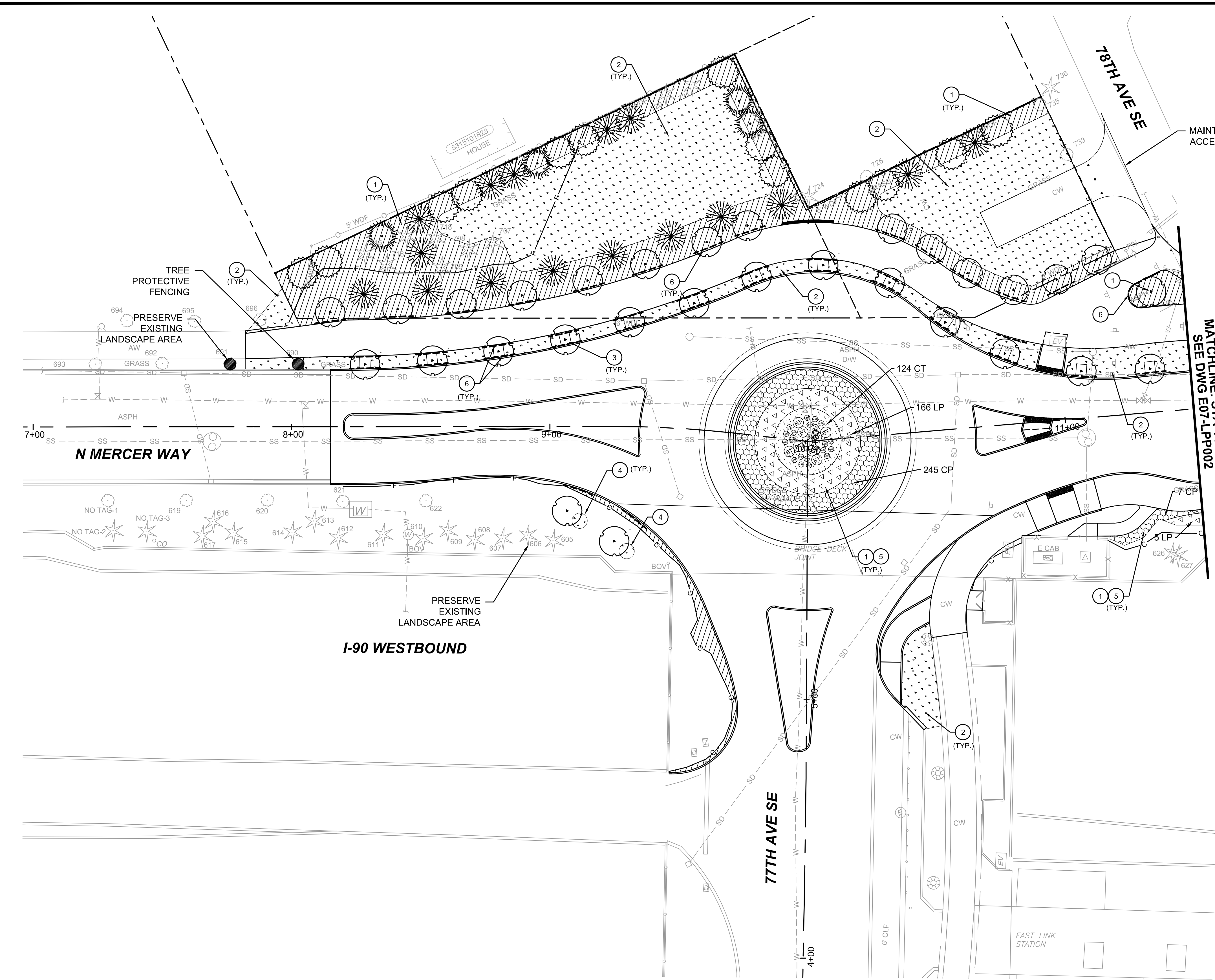
- 1 PREPARE PLANTING BEDS WITH PLANTING AREA SOIL AS PER DETAIL 1, DRAWING NO. E07-LPD002.
- 2 PREPARE ALL SOD LAWN AREA SOILS PER DETAIL 3, DRAWING NO. E07-LPD002.
- 3 PREPARE ALL STREET TREE PLANT PITS PER DETAIL 1, DRAWING NO. E07-LPD001
- 4 RESTORE DISTURBED AREAS PER DETAIL 2, DRAWING NO. E07-LPD002.
- 5 INSTALL GROUNDCOVERS AND / OR SHRUBS PER DETAILS 4 AND 5, DRAWING NO. E07-LPD001.
- 6 INSTALL ROOT BARRIER PER DETAIL 1, DRAWING NO. E07-LPD001.

GENERAL NOTES

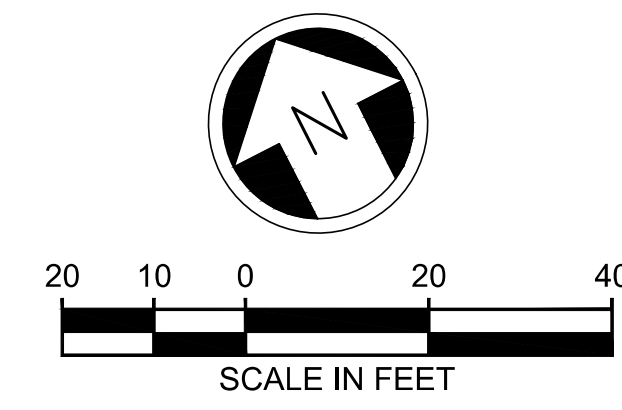
1. SEE DRAWING NO. E07-LPP002 FOR PLANTING SCHEDULE, PLANT SYMBOLS AND HATCH LEGEND.
2. SEE DRAWING NO. E07-LPD002 FOR SOIL PREPARATION.
3. SEE DRAWING NO. E07-LPD001 FOR PLANTINGS DETAILS.
4. SEE DRAWING NOS. E07-CRP001 THROUGH E07-CRP003, ROADWAY AND PAVING PLAN FOR HARDSCAPING.
5. SEE DRAWING NOS. E07-LRP001 THROUGH E07-LRP003 FOR IRRIGATION PLAN.

LEGEND

- SOD
- BARK OR WOOD CHIP MULCH
- ROOT BARRIER
- EXISTING EVERGREEN TREE TO REMAIN
- EXISTING DECIDUOUS TREE TO REMAIN

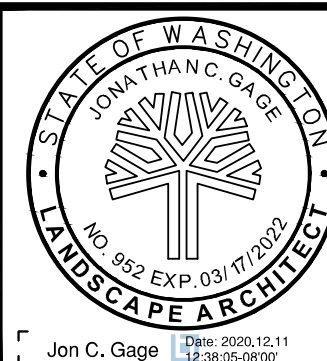


MATCHLINE: STA 11+50.00
SEE DWG E07-LPP002



ISSUED FOR BID

DESIGNED BY:
J. GAGE
DRAWN BY:
G. KING
CHECKED BY:
D. LIFTIN
APPROVED BY:
J. GAGE



DAVID EVANS AND ASSOCIATES INC.
14432 SE Eastgate Way, Suite 400
Bellevue Washington 98007
Phone: 425.519.6500

LINE IS 1" AT FULL SCALE



SCALE:
1"=20'
FILENAME:
E135-E07-LPP001-003
CONTRACT No.:
RTA/AE 0072-19
DATE:
12/11/2020

**EAST LINK EXTENSION
MERCER ISLAND TRANSIT INTERCHANGE**
77TH AVE SE, 80TH AVE SE, & N MERCER WAY
LANDSCAPE PLAN

DRAWING No.:
E07-LPP001
LOCATION ID:
E07
SHEET No.:
95 OF 104
REV:
0

12/11/20 12:05 PM | OXA P:\SISTRAD\000007\0400CAD\TTSHEETS\E135-E07-LPP001-003.DWG

No.	DATE	DSN	CHK	APP	REVISION

SUBMITTED BY:
A. WILEN

DATE:
12/11/2020

REVIEWED BY:
M. LU

DATE:
12/11/2020